

DIP Switches

Current Range			
SW	1	2	Setting
	Off	Off	100% (default)
	Off	On	50%
	On	Off	25%
	On	On	12.5%

Pump Run Time Target				
SW	3	4	5	Setting
	Off	Off	Off	3 min
	Off	Off	On	5 min (default)
	Off	On	Off	8 min
	Off	On	On	15 min
	On	Off	Off	30 min
	On	Off	On	1 h
	On	On	Off	2 h
	On	On	On	4 h

Alarm Relay Activates for ...	
SW	Setting
6	AIN (CT) Fault
7	Stop / Low Float
8	Start / High Float
9	Fail to Run (Low Current)

On = Activates for this condition. Default= Off,Off,Off,Off

Stop / Low Float Invert		
SW	10	Setting
	Off	Closed = Low
	On	Open = Low

Current Window (%)	
SW	Setting
11	On: +16%
12	On: +8%
13	On: +4%
14	On: +2%

Default = Off,Off,Off,On.

Modes		Default = Off,Off
SW	Setting	
15	On: Disable Snore Stop	
16	On: Disable Timer Start	

Current % Display

PA = PAUSING. Pump is Pausing.

CL = CLEANING. Pumps is Stopped for a Cleaning flush.

Number = The measured current as a percentage of the measured range (taking into account the Current Transformer range configured using the DIP switches).

Terminals

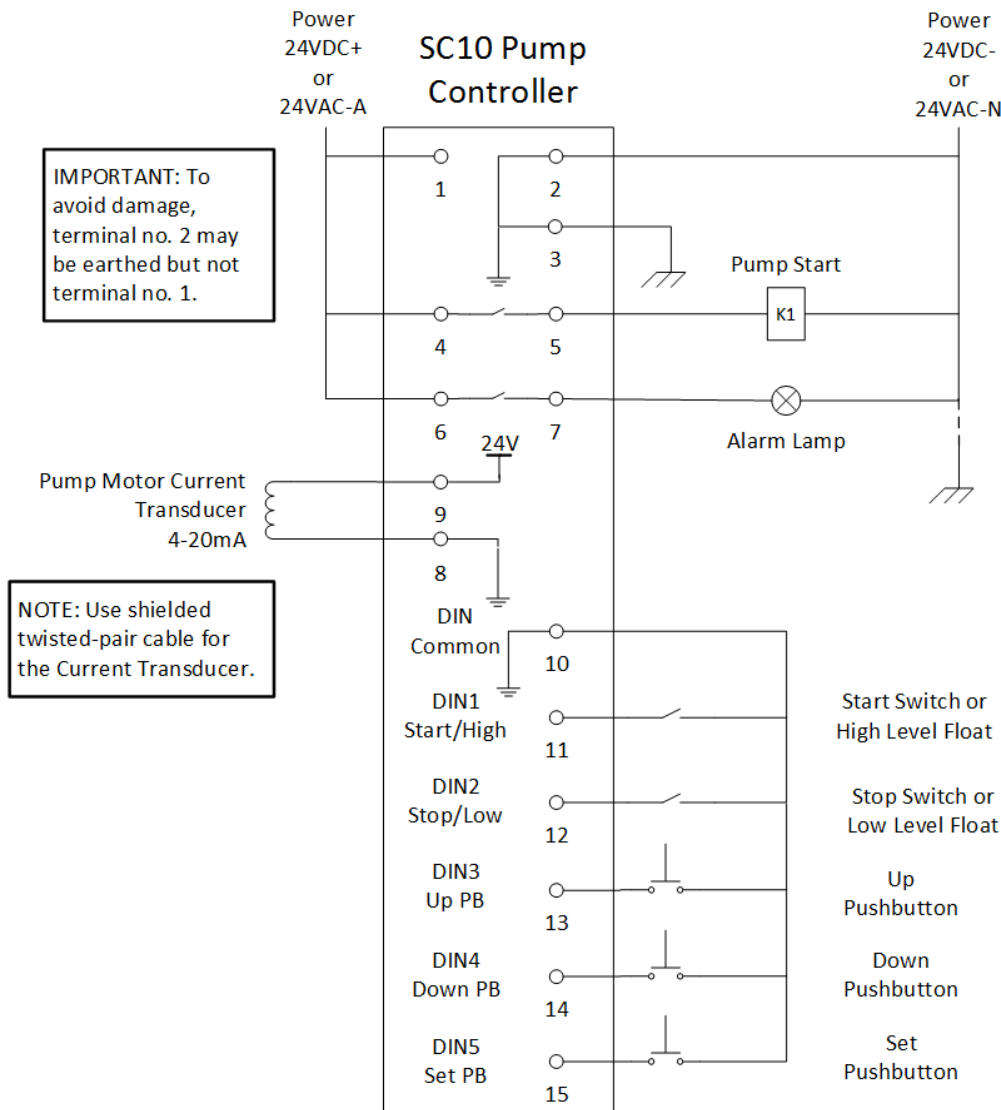
Power	DC+ / AC	1
24VAC	DC- / AC (Earth)	2
12-24VDC	Earth	3
Pump Run Relay		4
		5
Alarm Relay		6
		7
Pump Current CT (4-20mA)	-	8
	+	9
Digital Inputs	DIN Common	10
	DIN 1: Start / High Float	11
	DIN 2: Stop / Low Float	12
	DIN 3: Up Pushbutton	13
	DIN 4: Down Pushbutton	14
	DIN 5: Set Pushbutton	15
	DIN 7: Disable Cleaning Cycle	17
	DIN 8: Remote Config. Mode	18
No Connection		19-27
Do not use (AIN+ Loop Power)		28
Modbus RTU (RS485)	A	29
	B	30
	Earth	31
No Connection		32-36

LED Indicators

Power	On	Power is Present
	Flash	Unit starting up.
Run / Pause	On	Pump is Running
	Pulse	Pump is Pausing and will start when pause timer completes or high float or start signal activates.
	Flash	
	Fast	Pump Snoring. Pump will stop after 10 seconds of snoring
	Flash	
	Slow	Pump Starting or running a cleaning cycle.
	Flash	
Stop Input / Low Float	On	Stop Input / Lo Float Active
Start Input / High Float	On	Start Input / Hi Float Active
Alarm	Flash	Alarm Present & Alarm Relay Active
Fail to Run	On	Pump previously failed to run. (Current Not detected when the pump run relay is active.)
	Fast	Pump is failing to run.
	Flash	
Hi Current	Fast	CT input too high
	Flash	
	Pulse	CT input is above 100% of range. Consider adjusting CT measuring range or using a larger CT.
	Flash	
Lo Current	Fast	CT input too low.
	Flash	

Pulse Flash = Active for 0.25 secs every second.

Slow Flash = 1Hz Flash. Fast Flash = 2 Hz Flash.



Quick Commissioning – Setting the Stop Current

Pressing the Set button combination (↑+↓ simultaneously) or a pushbutton connected to the Set Pushbutton input sets the Stop Current to Measured Current + Window Current

To Set the Stop Current Setpoint perform the following steps:

1. Ensure that there is enough fluid in the sump or container so the pump doesn't immediately draw in air
2. Press the Start button on the relay or on the front of the panel to start pump.
3. When the pump running and is snoring (drawing air), press the ↑Up and ↓Down buttons simultaneously. The stop current setpoint is now set to the displayed percentage.
4. Allow water to fill above pump suction and start the pump again to ensure it stops when snoring. If it doesn't stop adjust setting or expand window current.

